

**Abbott  
PanBio**  
at-home  
rapid antigen  
test for  
COVID-19



**Note:**

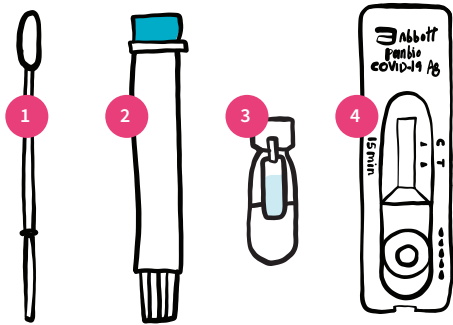
It is important to follow the instructions carefully for accurate results.

**Your testing kit contains:**

1. nose swab
2. empty tube
3. bottle of liquid
4. test unit

**You will need:**

- ✓ clean, level surface
- ✓ paper towel
- ✓ hand sanitizer
- ✓ timer or clock



Adapted from Abbott PanBio product insert – Updated Jan. 19, 2022

**Do not eat or drink for at least 30 minutes before taking the test.**

Adopted from Nova Scotia Health Jan 30, 2022

**Before you start:**

- ✓ Clean your hands.
- ✓ Place paper towel on a clean, level surface.
- ✓ Open the contents of your testing kit.
- ✓ Remove the test unit from the wrapper.
- ✓ Write your name with marker or pencil on the unit if testing more than one person.

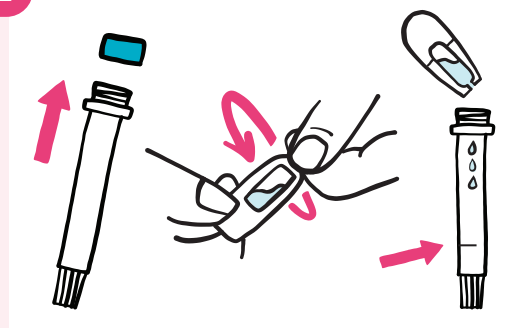


Scan this QR code for an instructional video: [cyfn.cacovid-19](https://cyfn.cacovid-19)

**Note:**

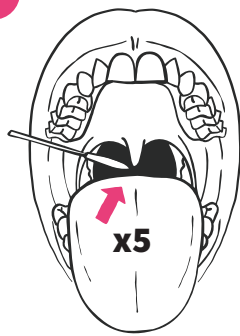
For better accuracy of the test, we recommend swabbing both the throat and nostril using the same swab. If you choose to only swab one spot, it must be your nostril (throat swab alone will not give accurate results).

**1**



Remove **BLUE** cap from the tube. Twist the top off the bottle of liquid. Squeeze liquid into the tube until it reaches the line.

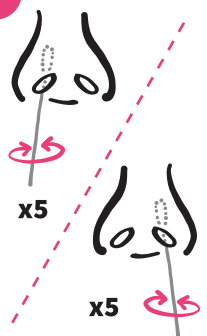
**2**



Tilt your head back, and open your mouth.

Without touching the sides of your mouth or tongue, use the swab to rub the back of your throat (area shaded black in the drawing) 5 times back and forth (this may cause you to gag).

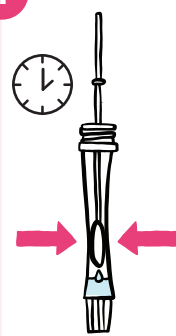
**3**



Using the same swab, put the swab into your nostril about 2cm (for small children, just put the swab into the nostril).

Rub and rotate the swab 5 times around and repeat for the other nostril (your eyes may water).

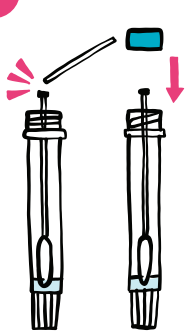
**4**



Gently lower swab into the liquid, stirring up and down for 10 seconds.

Pinch tube around swab to squeeze out remaining liquid.

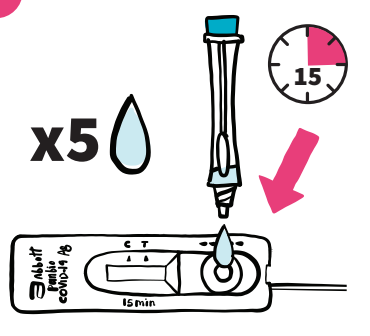
**5**



Find the break line on the swab handle and snap the swab here.

Replace the **BLUE** cap, with the swab remaining inside of the tube.

**6**



Twist off the **WHITE** dropper cap from the bottom of the tube.

Gently squeeze 5 drops into the round well of the test unit.

Let the sample move across the white strip.

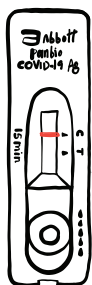
Leave unit on level surface for 15 minutes.

**7**



When finished, put testing supplies in the garbage, sanitize your hands, and clean your testing space.

**RESULTS (AFTER 15 MINUTES)**

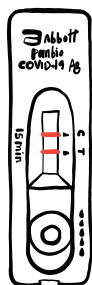


**NEGATIVE — ONE LINE**

one line at the C (control) mark, no line at the T (test) mark

Please note:

- ✓ A single negative result cannot be used to rule out COVID-19 in a person with symptoms.
- ✓ Stay at home if sick and repeat the test in 48 hours.



**POSITIVE**

one line at the C (control) mark, one line at the T (test) mark

You must:

- ✓ Isolate immediately.
- ✓ If you are at risk and you have tested positive, please arrange for a PCR test <https://yukon.ca/en/get-covid-19-test#lab-based-pcr-testing>.
- ✓ If you test positive using a rapid test, you need to consider yourself as having COVID-19, assume you are contagious, and you and your household must self-isolate. You also need to inform your close contacts.
- ✓ Visit <https://yukon.ca/en/get-covid-19-test#positive> to get more information on what to do.

**Thank you  
for getting tested!**

**INVALID** — If your test does not match either the negative or positive examples, the test should be repeated with a new kit.

**Keep testing kit out of reach of children and pets. Do not drink test fluid.**