



# BTNX Rapid Response at-home rapid COVID-19 test

### Note:

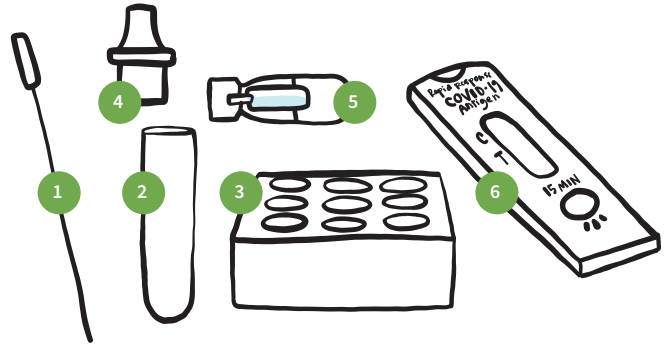
It is important to follow the instructions carefully for accurate results.

### Your testing kit contains:

1. nose swab
2. tube
3. tube stand
4. dropper lid
5. package of clear liquid
6. test unit

### You will need:

- ✓ clean, level surface
- ✓ paper towel
- ✓ hand sanitizer
- ✓ timer or clock



Adapted from BTNX Rapid Response product insert — Updated Jan. 19, 2022

**Do not eat or drink for at least 30 minutes before taking the test.**

Adapted from Nova Scotia Health Jan 30, 2022

### Before you start:

- ✓ Clean your hands.
- ✓ Place paper towel on a clean, level surface.
- ✓ Open the contents of your testing kit.
- ✓ Place tube in stand so that it is upright.
- ✓ Write your name with marker or pencil on the unit if testing more than one person.

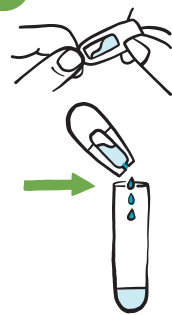


Scan this QR code for an instructional video: [cyfn.ca/covid-19](https://cyfn.ca/covid-19)

### Note:

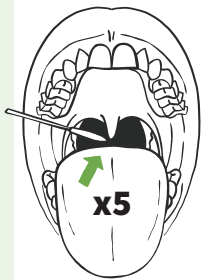
For better accuracy of the test, we recommend swabbing both the throat and nostril using the same swab. If you choose to only swab one spot, it must be your nostril (throat swab alone will not give accurate results).

1



Tear top off of the tube of clear liquid, and empty its entire contents into the tube (without touching the liquid or the openings of the package or tube).

2



Tilt your head back, and open your mouth.

Without touching the sides of your mouth or tongue, use the swab to rub the back of your throat (area shaded black in the drawing) 5 times back and forth (this may cause you to gag).

3



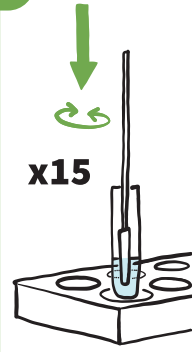
Using the same swab, put the swab into your nostril about 2cm (for small children, just put the swab into the nostril).

Rub and rotate the swab vigorously for 5 seconds.

Squeeze your nose while rubbing and rotating for 5 more seconds.

Repeat for the other nostril using the same swab (your eyes may water).

4



Gently lower swab into the tube of liquid, stir the swab in the liquid, pinching it by squeezing the tube around the swab 15 times.

Stirring and squeezing will make sure all the sample is mixed into the liquid.

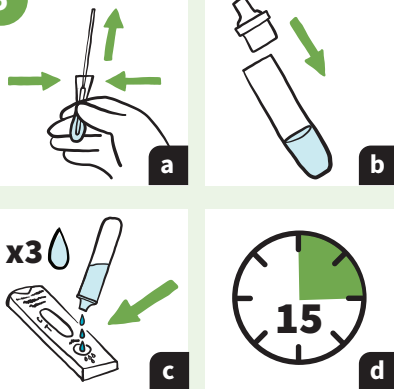
5



Wait.

Leave the swab in the liquid, and let the tube sit for two minutes.

6



Squeeze the liquid out of the swab by pinching the tube and slowly pulling the swab out. **Throw out the swab.**

Put the dropper lid on the top of the tube (b) and turn it upside down to gently squeeze three drops of liquid into the small well of the test unit (c).

Leave the test unit on a level, flat surface for 15 minutes.

7

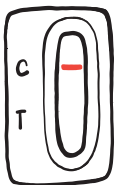


When finished, save your tube stand and put remaining testing supplies in the garbage, sanitize your hands and clean your testing space.



The area that displays the results will turn pink before turning back to white when it is time to read the result.

## RESULTS (AFTER 15 MINUTES)

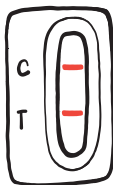


### NEGATIVE — ONE LINE

one line at the C (control) mark, no line at the T (test) mark

#### Please note:

- ✓ A single negative result cannot be used to rule out COVID-19 in a person with symptoms.
- ✓ Stay at home if sick and repeat the test in 48 hours.



### POSITIVE — TWO LINES

one line at the C (control) mark, one line at the T (test) mark

#### You must:

- ✓ Isolate immediately.
- ✓ If you are at risk and you have tested positive, please arrange for a PCR test <https://yukon.ca/en/get-covid-19-test#lab-based-pcr-testing>.
- ✓ If you test positive using a rapid test, you need to consider yourself as having COVID-19, assume you are contagious, and you and your household must self-isolate. You also need to inform your close contacts.
- ✓ Visit <https://yukon.ca/en/get-covid-19-test#positive> to get more information on what to do.

*Thank you for getting tested!*

**INVALID** — If your test does not match either the negative or positive examples, the test should be repeated with a new kit.